



Model	RPM	Hz	HP	kW	SCFM	Pressure		Vacuum		Noise Level	Net Weight	
						mbar	"H2O	mbar	"H2O		kg	lbs
RB2	3450	60	.67	.5	63	167	67	144	58	61 dbA		
	2850	50	.4	.51	51	135	54	110	44			

*Refer to curves below for detailed performance data. Data subject to change without notice. Actual performance may vary by ±10%.

STANDARD FEATURES

- Housing - Aluminum
- Impeller - Aluminum, dynamically balanced
- Direct drive impeller
- Shock absorbing mounting base
- Quiet operation - below OSHA limits
- Inlet & outlet silencers included
- Regreasable bearing
- 40 Deg C ambient
- Performance tested ANSI/AMCA210-85

NOTE: The RB2 replaces the HB-201

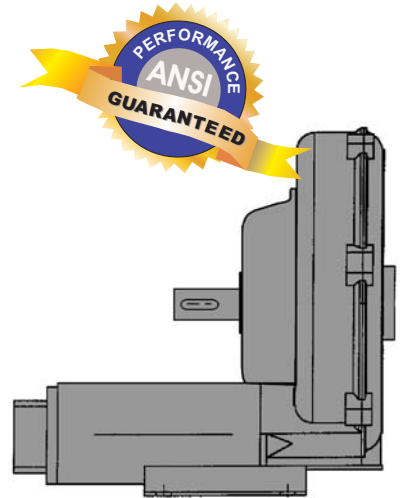
REQUIRED ACCESSORIES

Note: To obtain warranty coverage on the blower, a relief valve and filter are required.

Pressure Relief Valve RV-01
Pressure Relief Valve RVA-01

Vacuum Relief Valve RV-01
Vacuum Relief Valve RVA-01

Pressure Intake Air Filter F19P-125
Vacuum Air Filter CSL-849-125HC



TECHNICAL DATA

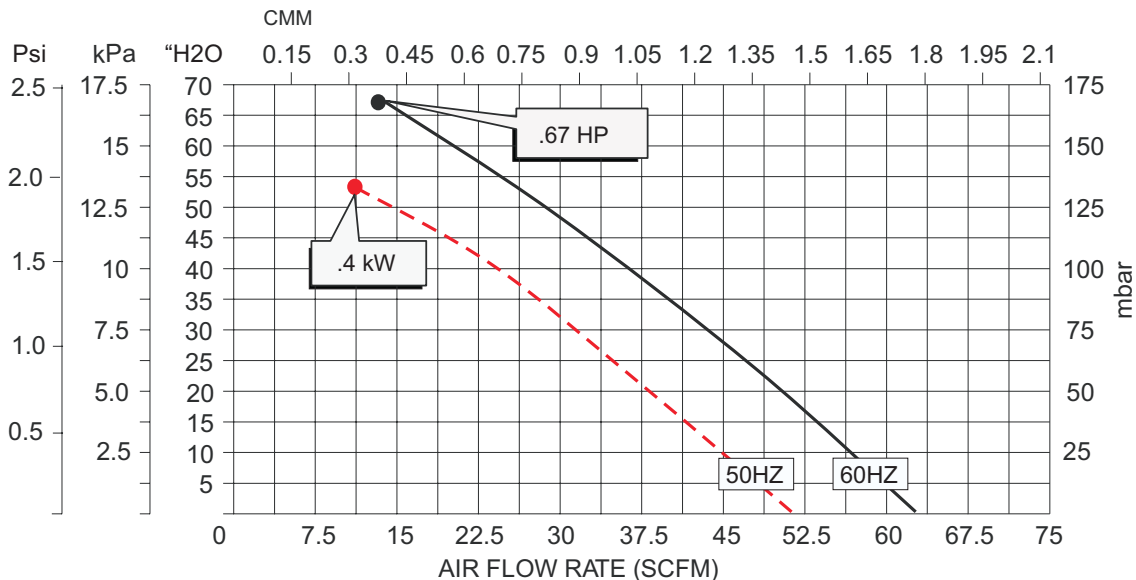
- [Available online www.all-star-usa.com]
- Performance Temperature Rise Curves
- AutoCad files
- Parts List

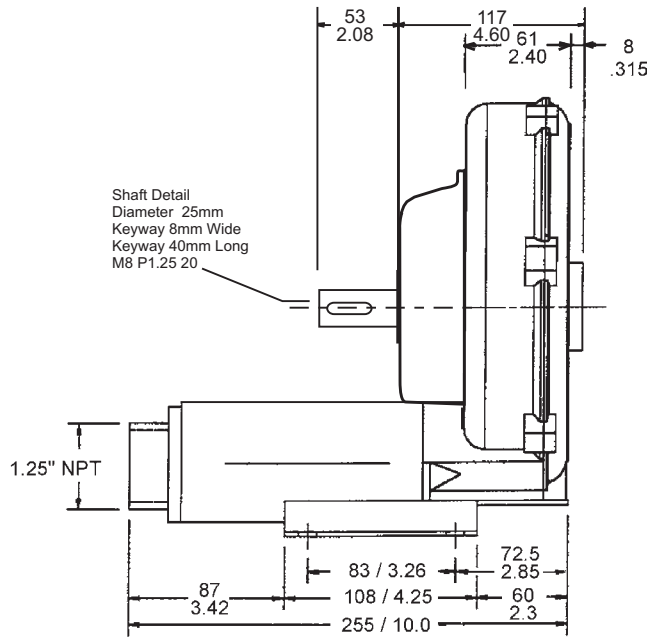
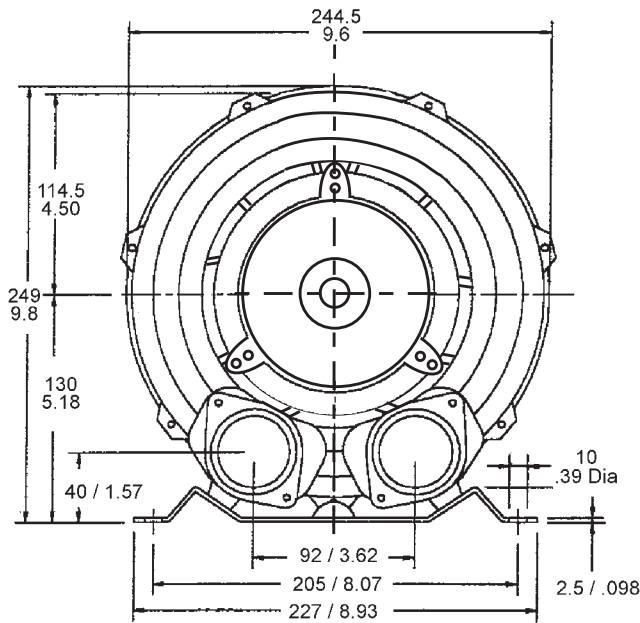


RoHS Compliant

PRESSURE DATA CURVES ±10%

[See reverse side for Vacuum Curves]





VACUUM DATA CURVES ±10%

