



Two Stage **Model HB-6475**

Hz	HP	kW	CFM	Pressure		Vacuum		Noise Level	Net Weight	
				mbar	"H2O	mbar	"H2O		kg	lbs
60	11.5	8.5	310	260	105	260	105	79 dbA	77	170
50	10	7.5	265	275	109	265	107	75 dbA	77	170

*Refer to curves below for detailed performance data. Data subject to change, actual performance may vary by ±10%. Contact All Star™ Products to verify current data.

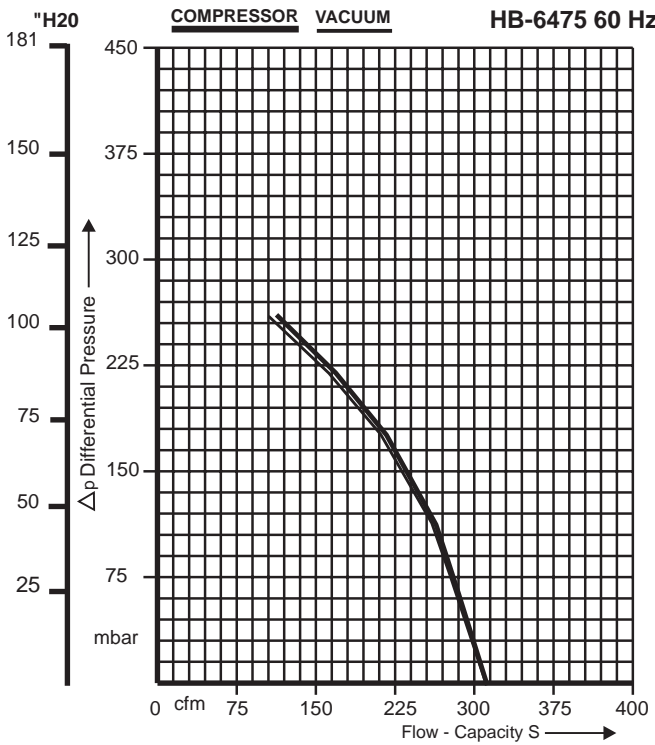
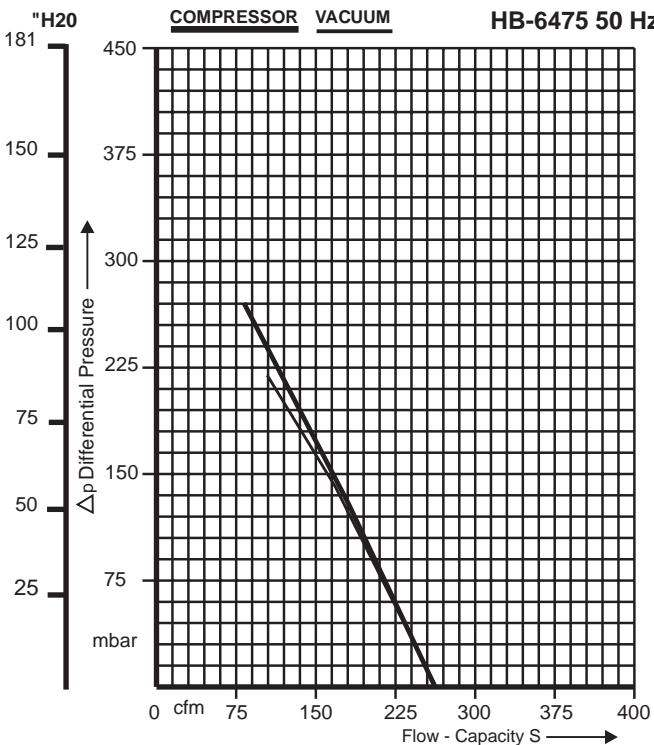
STANDARD FEATURES

- Housing - Aluminum
- Impeller - high efficient design, dynamically balanced die cast aluminum
- Direct drive impeller
- Shock absorbing mounting base
- Quiet operation - well below OSHA maximum noise limits
- Inlet & outlet silencers included as standard
- Motor input shaft seal standard
- IP 54 TEFC 2 pole squirrel cage ac motor
- 40 Deg C ambient
- UL component listed motor CE compliant
- Class H Insulation 1.15 service factor
- Standard voltage 3/60/208-230/460 & 3/50/220/380



OPTIONS & ACCESSORIES

Refer to All Star™ Products for different kW motor sizes, enclosures, special voltages and variable speed open and closed loop systems.

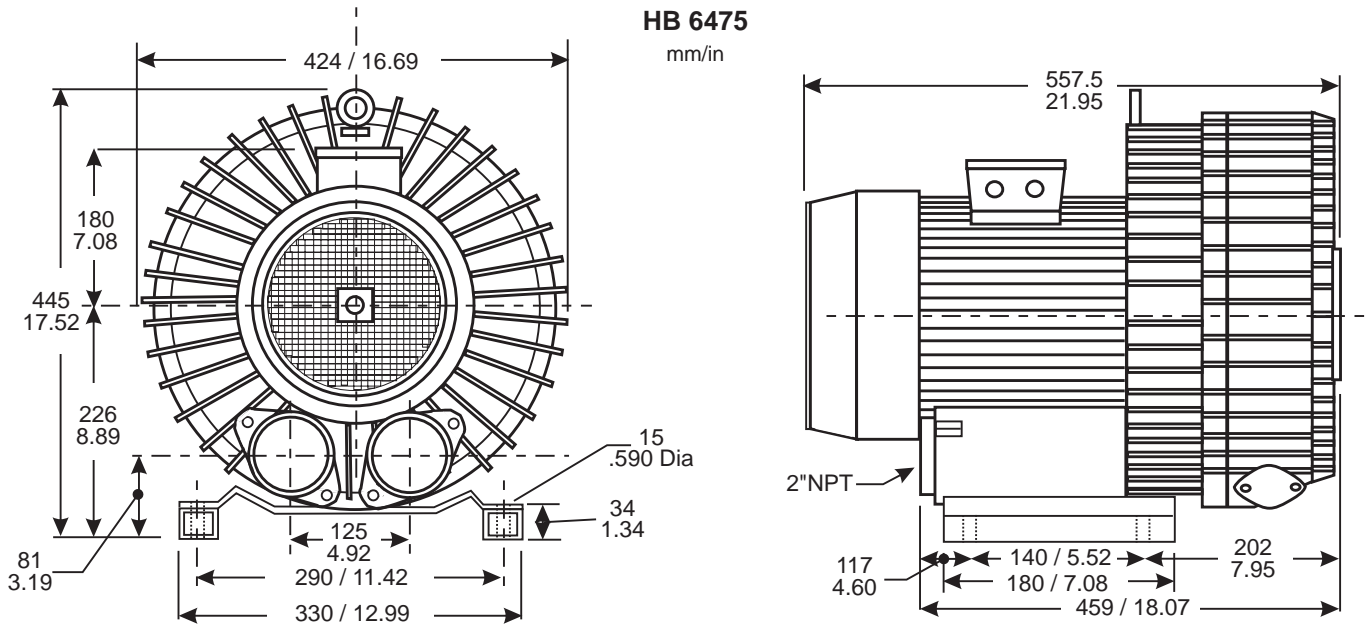


Register at <http://www.all-star-usa.com> for online services for current technical data, AutoCad drawings, competitive interchange tables, engineering and application information, order entry, check shipment status and new product information.

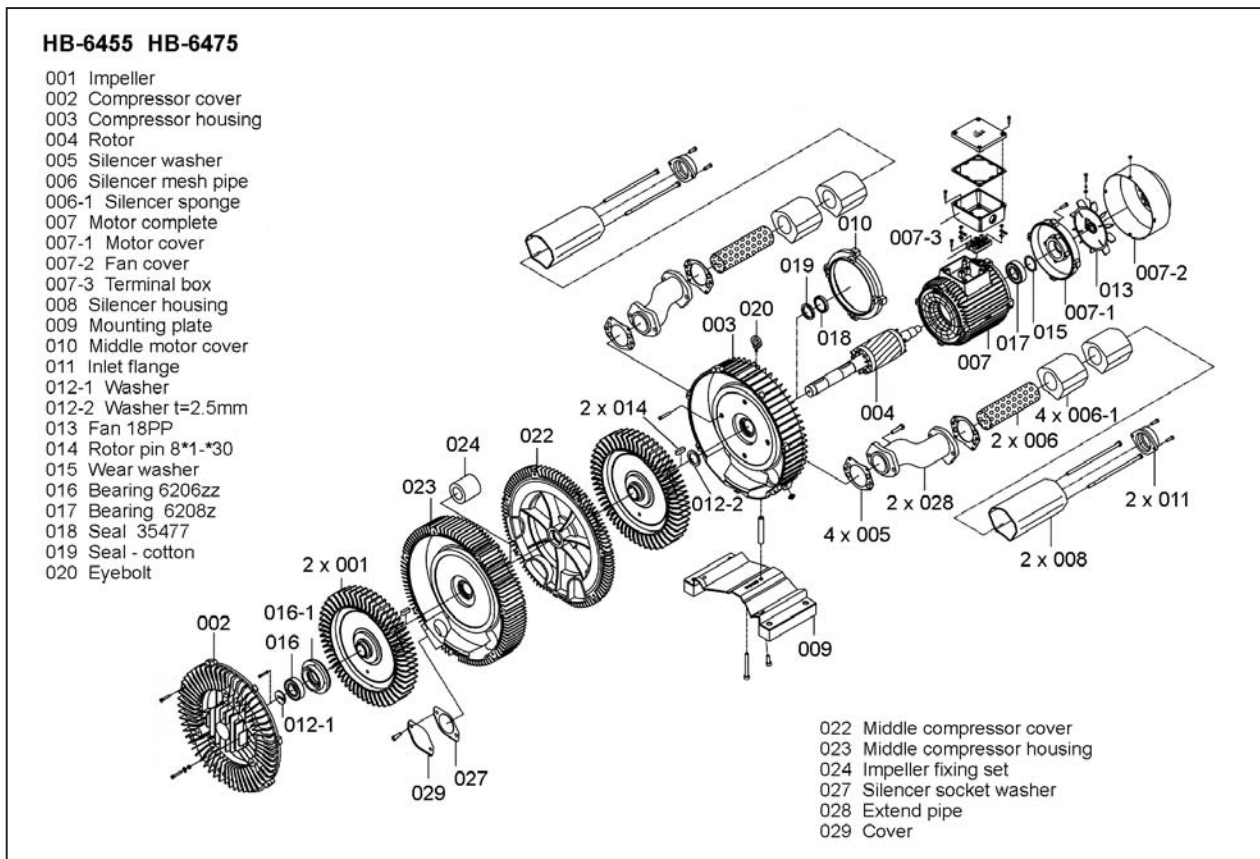


Engineered value since 1986. Visit us at <http://www.all-star-usa.com>

Effective 03-10-2003



For blower parts, include the model number before the part number, eg: HB-129-001 for the impeller.



Contact an All Star representative, distributor or the closest All Star office below.